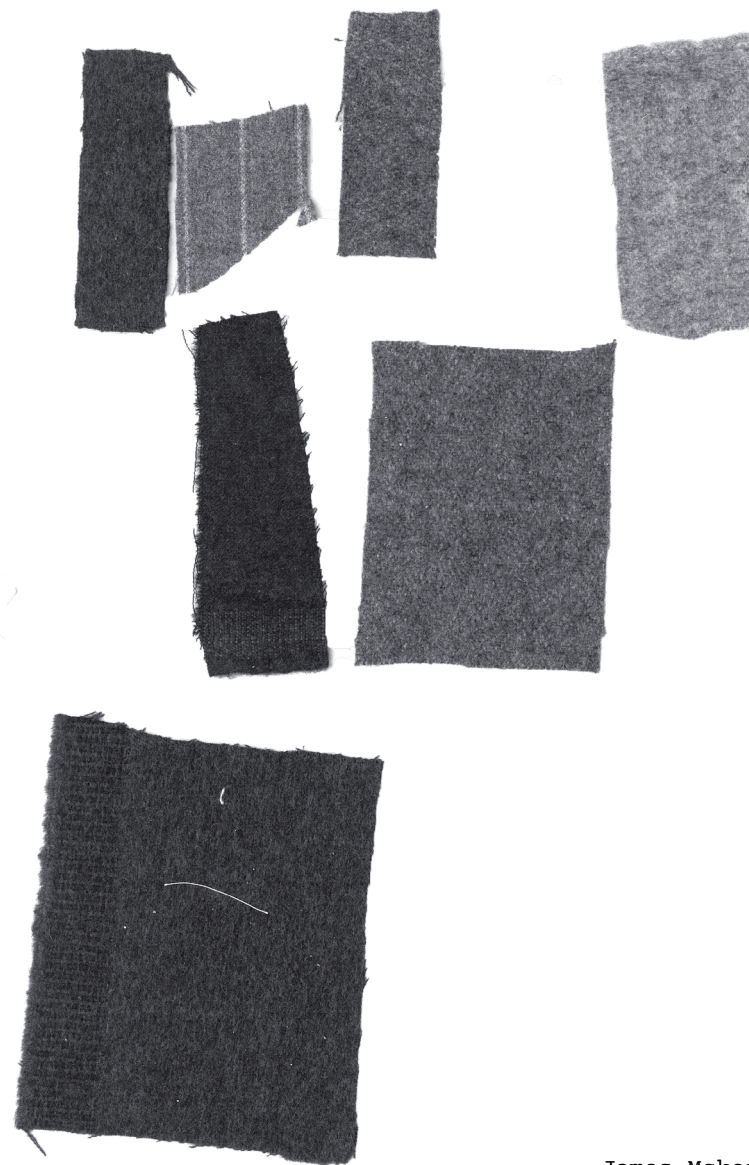


'Dark and Medullated Fibres'

RMIT Graduate Collection compressed Folio *



James Mckerracher

Design Statement:

My project is a 3 look F/W menswear collection inspired by the photography zine 'salarman' by Pawel Jaszczuk. The zine is composed of a series of images depicting men wearing suits unconscious in the street. The series sheds light on the working and drinking culture of Japanese businessmen, and highlights the contrast between historical associations with the tailoring archetype of elegance/composure, and the true nature of the wearer that hides beneath the facade of wool suiting.

My collection critiques the loss of nobility in the wearer of tailored suiting. The concept looks into the character of the wearer, and discusses our reliance on materiality to conjure up an identity and desired impression. The collection looks at the use of clothing to mask our imperfect interiors, visualising the stripping away of a moral facade by using visual tropes that draw parallels between the shearing of sheep to the deconstructing layers of businessmen's wool suiting. The metaphor of shearing the sheep aims to expose the corrupt and cracked underlayer of the wearer.

The 3 looks will adhere to a grey tonal palette focused mainly on weave and material transformations rather than a rich spectrum of colour. The wool's are a variety of thick flannels in varying shades of and weights that link to the symbolism of the sheep in relation to conformity, and uniformity present in the morally corrupt businessman motif.

Practitioner: Pawel Jaszczuk
'Salaryman' Photography Zine (2018)



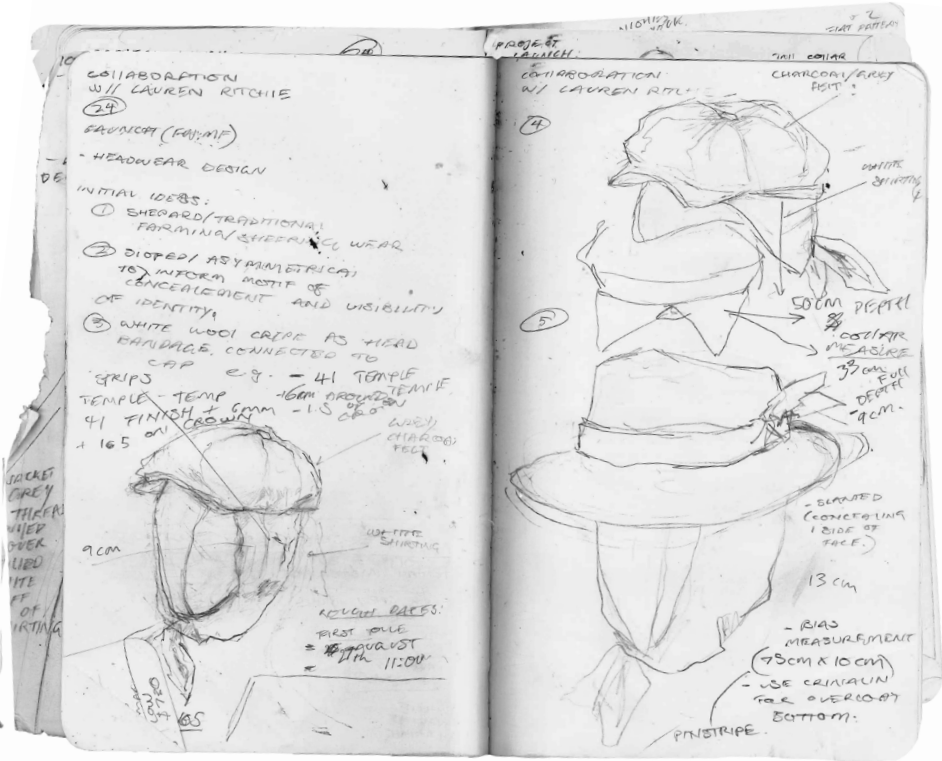
6 look collection range

F/W Menswear 24

Look NM 03 in lineup is the submission outfit



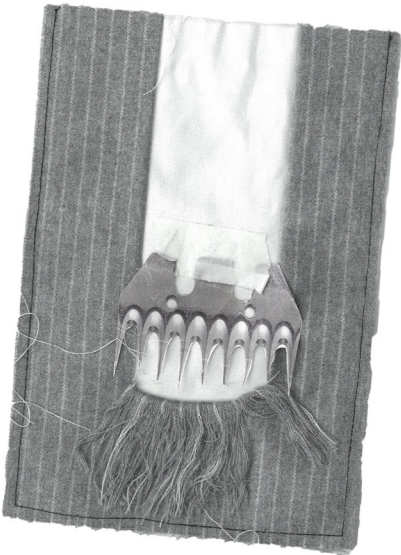
Sketching and swatch development:



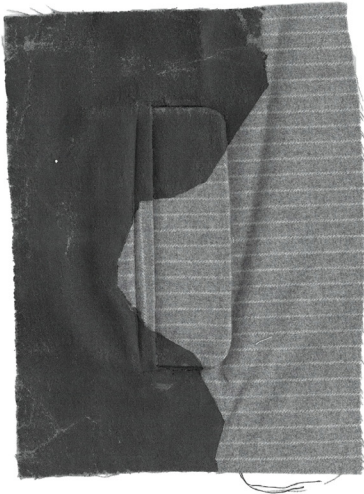
Swatch NM 01:



Swatch NM 02:



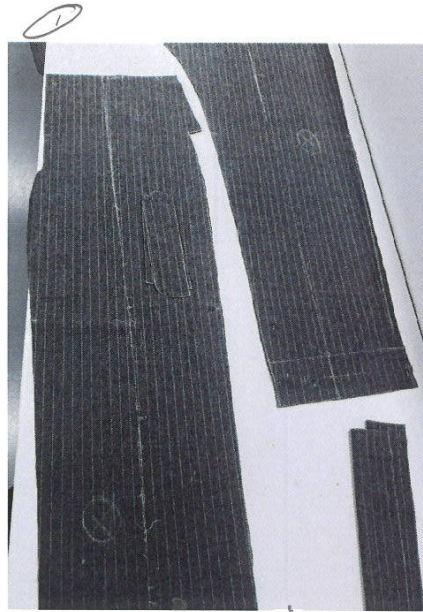
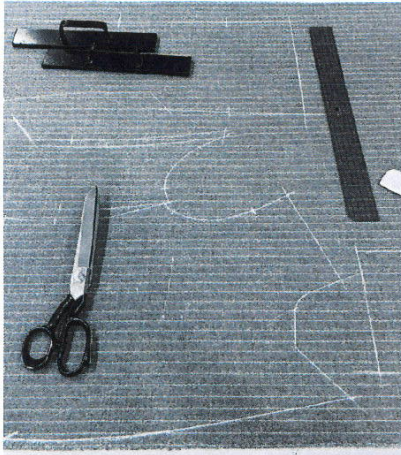
Swatch NM 03:



design developement:

Assembling look NM01

① CUTTING.



④ CANVASING

- CHEST PLATE
+ HALF CANVAS



- BACK - STITCHING
CANVAS + LAPEL



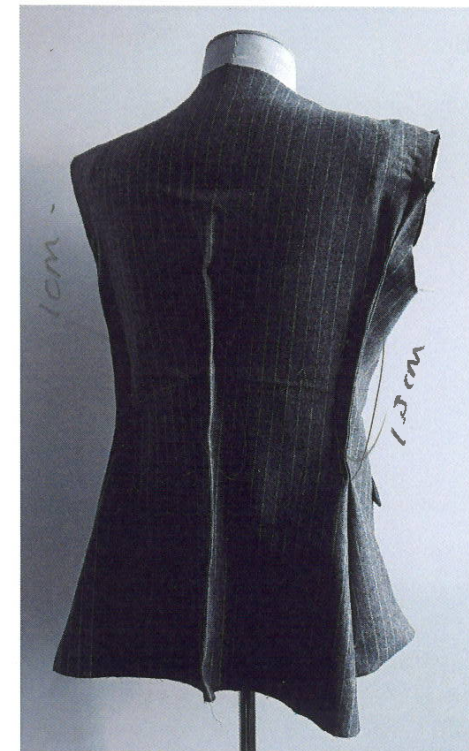
- FRONT COVER

- BACKSTITCHING
CANVAS

- ATTACHING FACING.
REQUIRES CHANGING TO ANOTHER



CHALK STRIPE.



ADJUSTMENTS AFTER FIRST
FITTING

Look NM// 02 submission:
Front, Back and Side

